

**\$20,000
\$PENDING
\$FREE**
FOR \$1990



bayswater 20

HOUSE & LAND \$705,990



— AUSTRAL —
**OLIVE
GROVE**

4 **2** **2**

House size* 185.2m²
House price \$285,990

Land size 321.3m²
Land price \$420,000

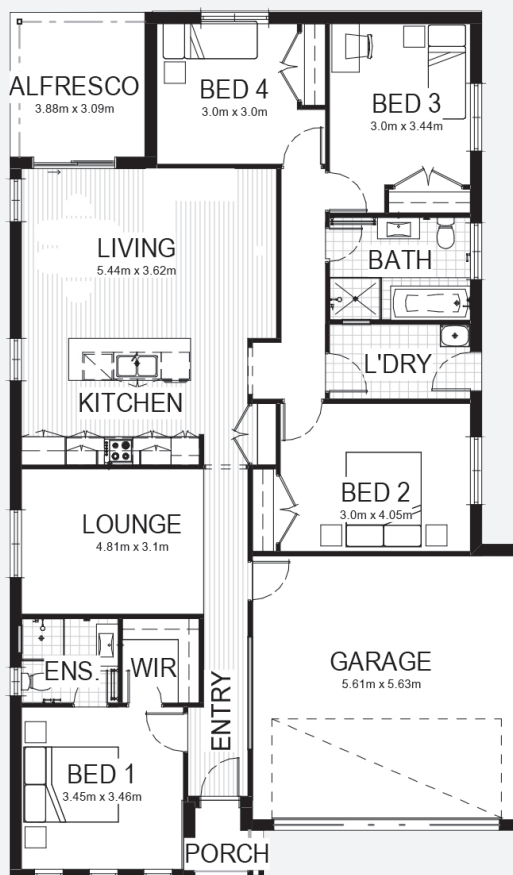
Lot 39
Yawa Street
Olive Grove Estate
Austral NSW 2179

PACKAGE FEATURES:

- Urban Series specifications & inclusions
- Basix report inclusive of rainwater tank
- Quality laminate flooring throughout
- Quality carpet to balance
- Stainless steel appliances
- Stainless steel 900mm rangehood
- Triple coated paint system
- 90mm wall frames
- Plain concrete to porch & alfresco

PACKAGE ALSO INCLUDES:

- Argenta façade
- Concrete driveway & path to entry



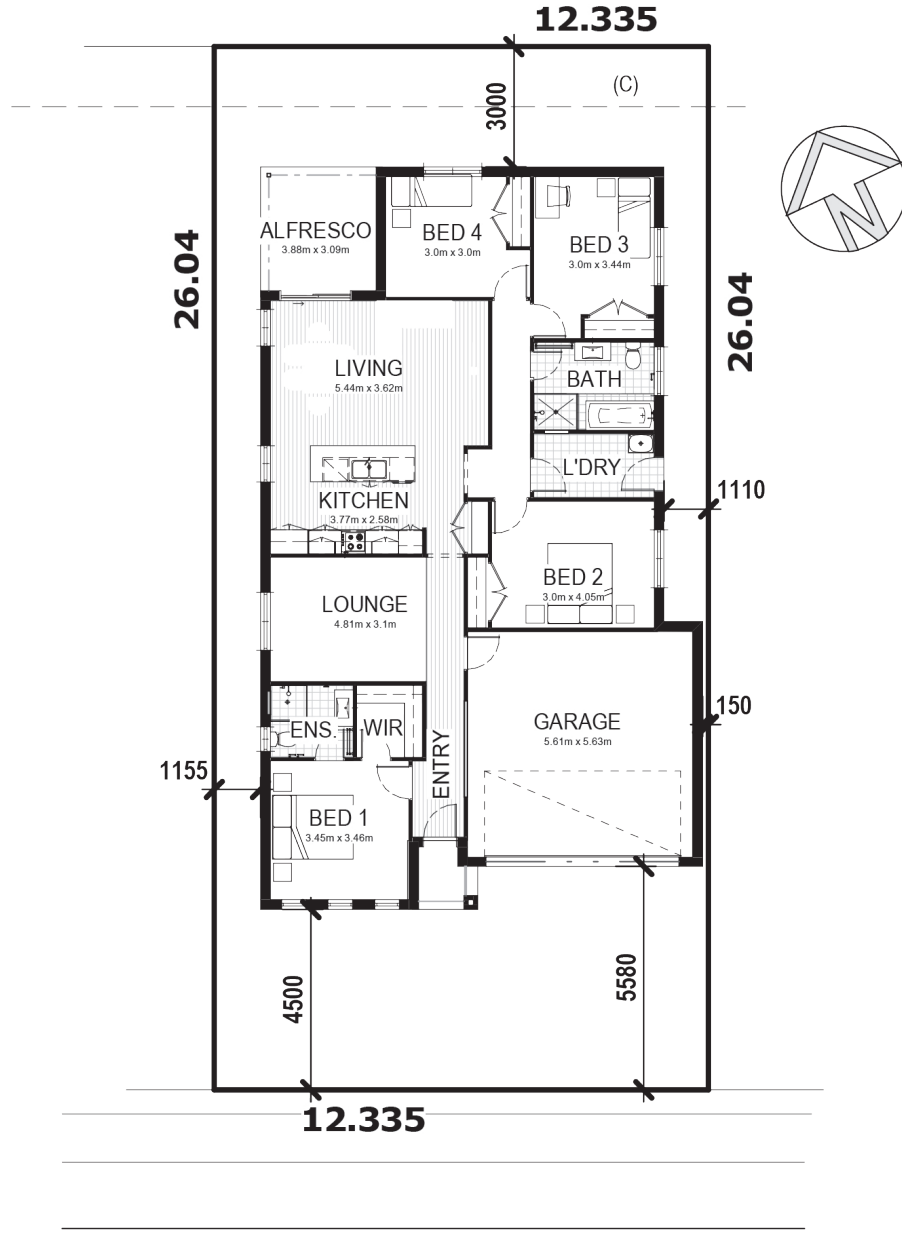
olivegroveaustral.com.au



*Includes garage, alfresco & porch. *Images are for illustrative purposes only and may include options not included in price. Please talk to a Bellriver consultant for a full list of inclusions. Package price is based on January 2020 pricelist. Bellriver Homes reserves the right to change specifications & prices without notice.

LOT 39

321.3m²



YAWA STREET

SIMPLIFIED CDC

Note: This is a preliminary siting and is subject to a clear copy of title and approval of the builder.

This siting is subject to developer approval, rescode (state building regulations) and council requirements (if required).

Land siting acceptance:

Sign 1:

Sign 2:

Date: